

### Panasonic Solution Developer Network

Panasonic is offering a PBX partner program (Panasonic Solution Developer Network for Communication Products) to offer integration between Panasonic PBX and 3rd party vendor applications. For the software vendors registered in the program, Panasonic provides the latest technical specification and support to our partners interoperability testing. The 3rd party vendor successfully tested the software product stated in this solution leaflet, in accordance with the 'self-test' specification provided by Panasonic.



## Unified Communications Solution

### ► *Type of Business and Merit*

- Type of Business : Financial Services, Telephone Services, Distribution, Transportation, Manufacturing, Government, Publishing, Healthcare, Utilities, Insurance, Education, Services
- Merit: Person-centric communications using a single identity, Presence-based communications, Streamlined communications

### ► *Application Name - Vendor*

Polys Gateway for Microsoft Lync - Polys Inc.

### ► *Overview*

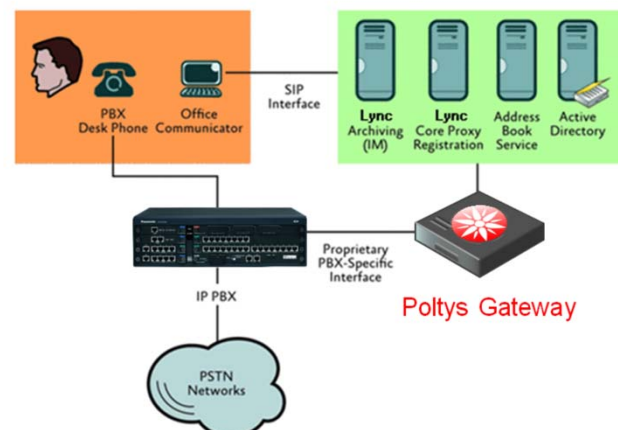
Polys Gateway for Microsoft Lync provides the technology to link Microsoft Lync Server to the Panasonic telephone system.

This provides Remote Call Control (RCC) services to allow users to control and interact with their telephone handsets from within the Lync client.

### ► *Main Feature*

- Compatible with Microsoft® Lync® Server
- Easy to install and configure
- When a call rings at a user's desk phone, it also appears in Microsoft Lync
- Users can use Microsoft Lync to dial, answer, hang up, hold, retrieve, transfer, and deflect calls on their desk phone
- Call forwarding state of the user's desk phone can be controlled
- When a user's desk phone is busy, their presence status in Microsoft Lync is shown as "in a call"

### ► *System Configuration*



## ► Features

### Supported Call Control Operations

- Make Call
- Answer Call
- End Call
- Blind Transfer
- Hold/ Retrieve Call
- Forward Call

### Person-centric communications using a single identity

- Communicate with a person, don't dial a device

### Presence-based communications

- Only attempt to communicate with someone who is advertising his or her willingness and ability to communicate

### Streamlined communications

- Choose the right communications way
- Easily move from one communications way to another
- Maintain the context of all active communications paths (e.g. subject, content)

## ► System Requirement

### PBX

Supported PBX	Panasonic KX-TDA100/200/600 KX-TDE100/200/600 KX-NCP500/1000 KX-NS1000
Connection	LAN/ USB

## ► Application Vendor Information



Panasonic  
Solution  
Developer  
Network

**Gold  
Partner**

**Company Name:** Palebeck

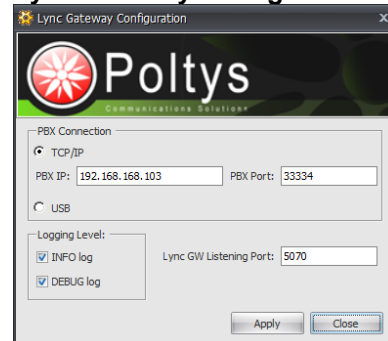
**Address:** 9 Little Portland Street, London, W1W 7JF

**Web:** <http://www.palebeck.co.uk>

**E-mail:** [info@pttl.co.uk](mailto:info@pttl.co.uk) - Call +44 (0)207 5807226

The above solution is based on written or verbal information received by Panasonic System Networks Co., Ltd. ("Company") from Panasonic Solution Developer Network for Communication Products member companies and may not have been independently verified by Company. Company DISCLAIMS ANY AND ALL PROMISES, REPRESENTATIONS, AND WARRANTIES, EXCEPT AS EXPRESSLY SET FORTH IN THIS DOCUMENT, WITH RESPECT TO INFORMATION FURNISHED TO YOU BY THIS DOCUMENT, INCLUDING THEIR CONDITION; CONFORMITY TO ANY REPRESENTATION OR DESCRIPTION; THE EXISTENCE OF ANY LATENT OR PATENT DEFECTS; AND TITLE, MERCHANTABILITY, OR FITNESS FOR A PARTICULAR PURPOSE OR USE. Prior specifying any these solutions for a particular application, you should verify the actual functionality of such solution. If you want information about above solution, please contact the above address. Design and specifications are subject to change without notice. The images shown of base unit display and lams are composite images. Microsoft and Windows are either registered trademarks or trademarks of Microsoft Corporation in the United States and/or other countries. Intel and Pentium are trademarks or registered trademarks of Intel Corporation or its subsidiaries in the United States and other countries. Other trademarks and trade names are those of their respective owners.

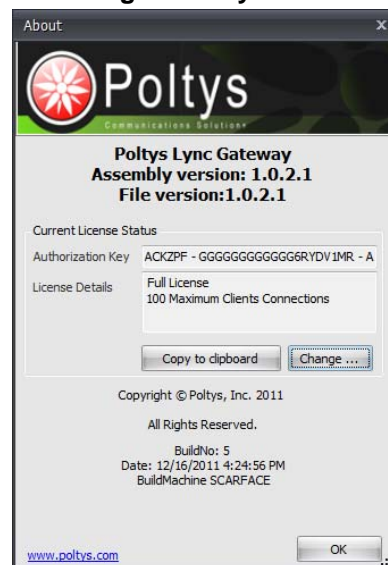
## Lync Gateway Configuration



## Configuring Static Route

	A	B	C	D	E
1	Name	IP	Port	Registrar	Site
2	Polty's	192.168.168.217	5070	COMAUDIO.polty's.test.ro	
3					
4					
5					

## Licensing Gateway



## Vendor Application

OS	Microsoft® Windows® XP Professional SP3 Microsoft® Windows Vista® Business SP1, SP2 (UAC disabled) Microsoft® Windows® 7 Professional (UAC disabled) Microsoft® Windows® 8, including Pro version (UAC disabled) Microsoft® Windows Server® 2003 SP2 Microsoft® Windows Server® 2008 R2 SP1 (UAC disabled) Microsoft® Windows Server® 2012 (UAC disabled)
CPU	Pentium® IV 2 GHz (or higher)
RAM	1 GB (or higher)
HDD	2 GB Minimum (installation)

