

Panasonic Solution Developer Network

Panasonic is offering a PBX partner program (Panasonic Solution Developer Network for Communication Products) to offer integration between Panasonic PBX and 3rd party vendor applications. For the software vendors registered in the program, Panasonic provides the latest technical specification and support to our partners interoperability testing. The 3rd party vendor successfully tested the software product stated in this solution leaflet, in accordance with the 'self-test' specification provided by Panasonic.



Customer Satisfaction Solution

► Type of Business and Merit

- Type of Business : Financial Services, Telephone Services, Distribution, Transportation, Manufacturing, Government, Publishing, Healthcare, Utilities, Insurance, Education, Services
- Merit : Enhance customer service quality, Increase customer satisfaction

► Application Name - Vendor

CCQueue Wait Time Announcer - Poltys Inc.

► Overview

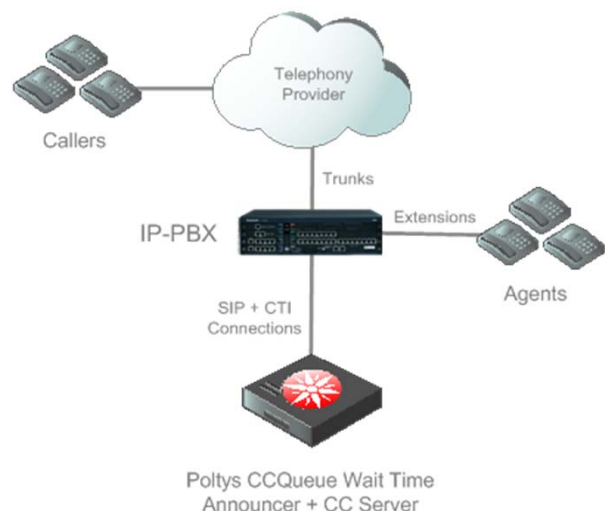
Poltys' CCQueue Wait Time Announcer is a turnkey solution that informs the caller about the estimated waiting time and position in the queue. It uses a set of predefined SIP Groups in the Panasonic IP-PBX in order to:

- Answer the inbound calls routed by the PBX
- Play queue messages to the caller
- Ask the caller for voicemail routing
- Route the incoming calls to the appropriate IP-PBX ICD queue.
- Offers callers a bail-out option

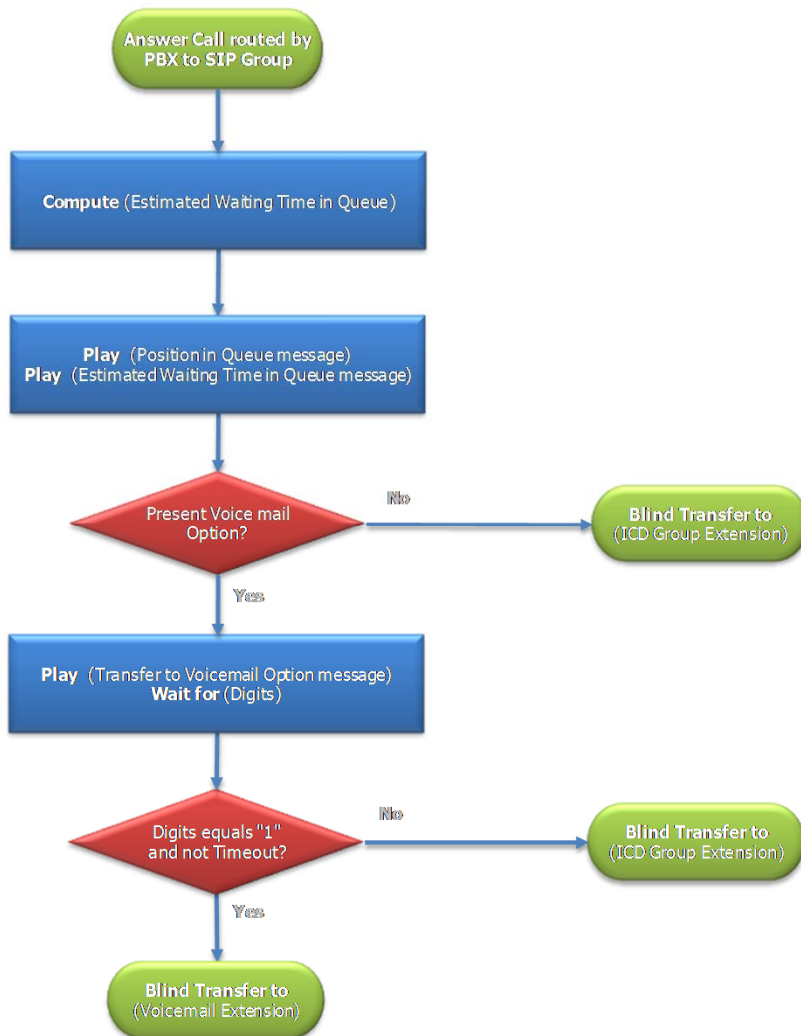
► Main Feature

- Compatible with Panasonic KX-TDE/ NCP/ NS1000 IP-PBX series
- Connect to the IP-PBX using SIP Extensions and CTI Link
- Automatic estimation of the waiting time in queue
- Play queue informative messages to the caller
- Configurable destination ICD Group and SIP Group list
- Configurable option that asks the caller if he/ she wants to leave a voicemail message or wait in the queue
- High scalability

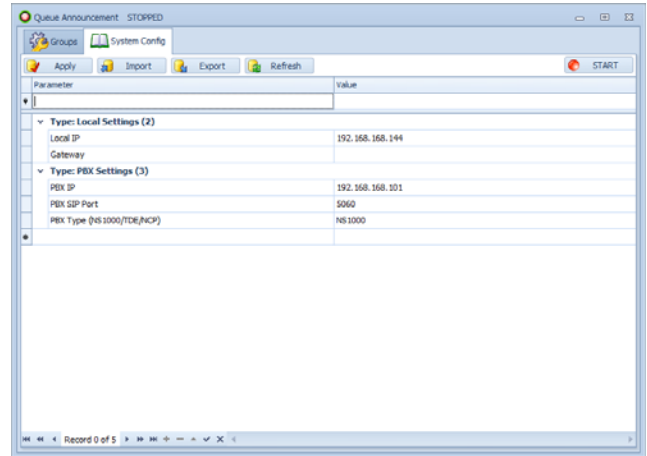
► System Configuration



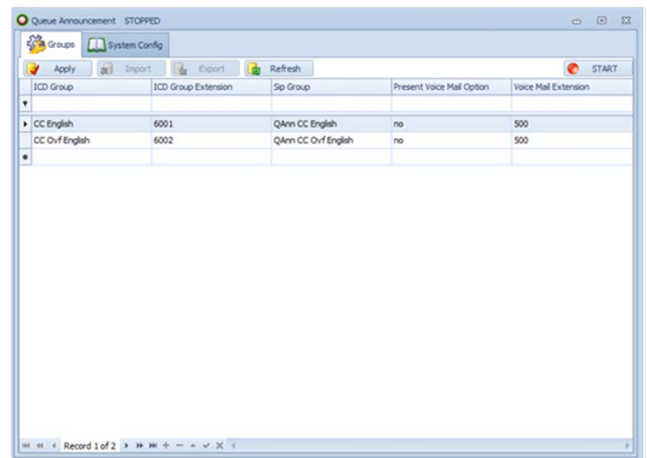
Call Flow



System Configuration Panel



Groups Panel



System Requirement

PBX

Supported PBX	Panasonic KX-T DE100/200/600, KX-NCP500/1000, KX-NS1000
Connection	LAN

Vendor Application

OS	Microsoft® Windows® XP Professional SP3 Microsoft® Windows Vista® Business SP1, SP2 (UAC disabled) Microsoft® Windows® 7 Professional (UAC disabled) Microsoft® Windows® 8, including Pro version (UAC disabled) Microsoft® Windows Server® 2003 SP2 Microsoft® Windows Server® 2008 R2 SP1 (UAC disabled) Microsoft® Windows Server® 2012 (UAC disabled)
CPU	Pentium® 4 2.5 GHz (or higher)
RAM	2 GB (or higher)
HDD	10 GB Minimum (installation)

Application Vendor Information



Panasonic
Solution
Developer
Network

**Gold
Partner**

Company Name: Palebeck

Address: 9 Little Portland Street, London W1W 7JF

Web: <http://www.palebeck.co.uk>

E-mail: info@pttl.co.uk - Call +44 (0)207 5807226

The above solution is based on written or verbal information received by Panasonic System Networks Co., Ltd. ("Company") from Panasonic Solution Developer Network for Communication Products member companies and may not have been independently verified by Company. Company DISCLAIMS ANY AND ALL PROMISES, REPRESENTATIONS, AND WARRANTIES, EXCEPT AS EXPRESSLY SET FORTH IN THIS DOCUMENT, WITH RESPECT TO INFORMATION FURNISHED TO YOU BY THIS DOCUMENT, INCLUDING THEIR CONDITION; CONFORMITY TO ANY REPRESENTATION OR DESCRIPTION; THE EXISTENCE OF ANY LATENT OR PATENT DEFECTS; AND TITLE, MERCHANTABILITY, OR FITNESS FOR A PARTICULAR PURPOSE OR USE. Prior specifying any these solutions for a particular application, you should verify the actual functionality of such solution. If you want information about above solution, please contact the above address. Design and specifications are subject to change without notice. The images shown of base unit display and lams are composite images. Microsoft and Windows are either registered trademarks or trademarks of Microsoft Corporation in the United States and/or other countries. Intel and Pentium are trademarks or registered trademarks of Intel Corporation or its subsidiaries in the United States and other countries. Other trademarks and trade names are those of their respective owners.